



Module 2

Introduction to the GPEDC Monitoring Exercise and
Overview of the Process

Global Partnership Monitoring: Overview

What is the Monitoring?



- Tracks progress on commitments
- Focuses on implementation of four principles

Overarching vision to:



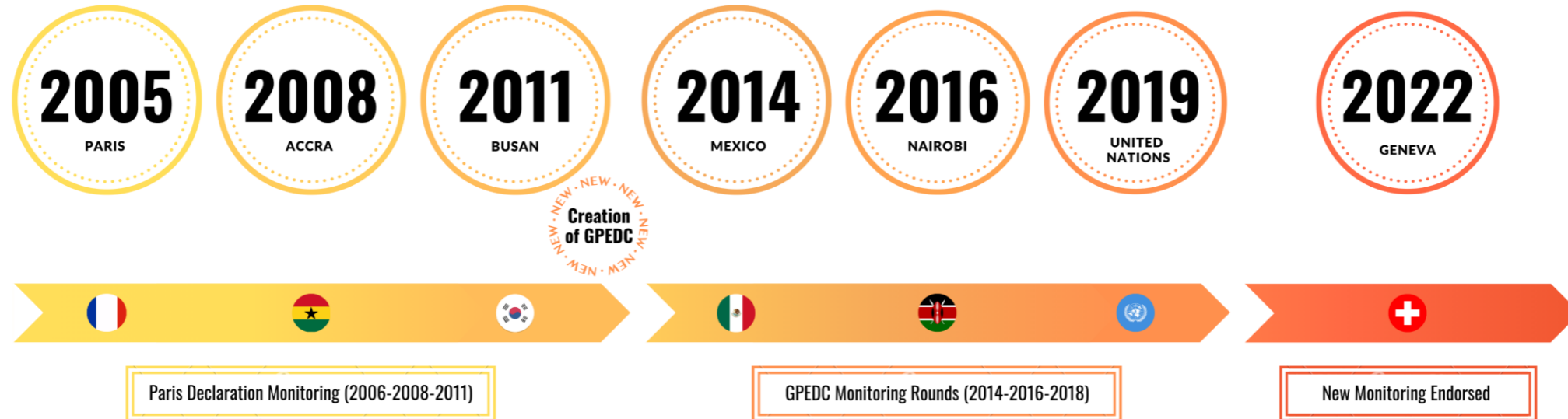
- Drive behaviour change, building on existing country-level efforts
- Support global accountability for Busan commitments

Key features:

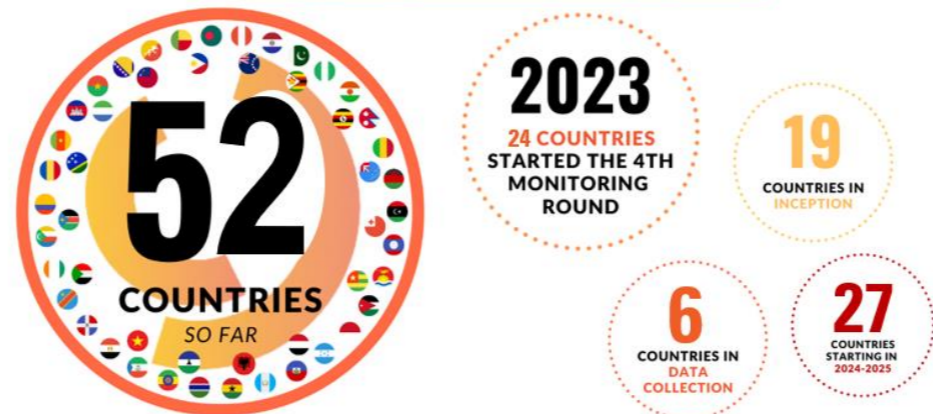


- Led by partner countries; multi-stakeholder
- Globally framed but country-driven and country focused
- Drives accountability, but also learning
- Focuses on *quality* of co-operation partnerships
- Political, with technical underpinning

Historical context and current status



(2023-2026) 4th Global Partnership Monitoring Round



Group exercise

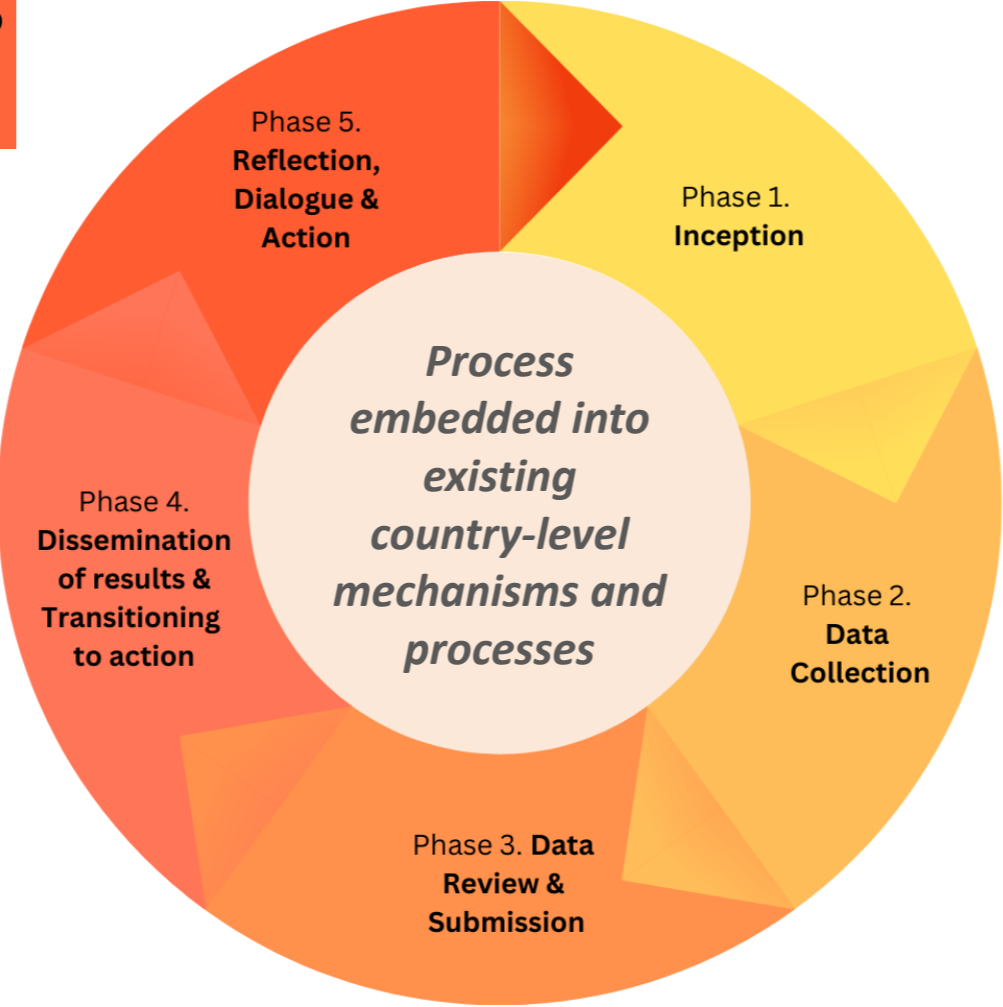
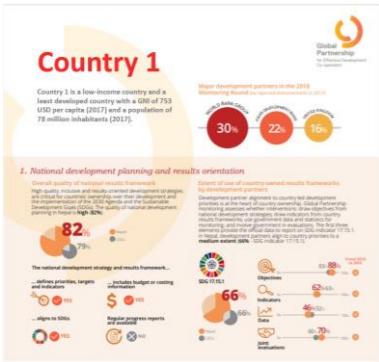
- *What are the main reasons your country decided to join the 4th monitoring round?*
- *Which key features of the monitoring exercise are most important in your country context, and why?*

Monitoring Process: country level

Evidence-based dialogues to reflect on results, develop and implement **action plans**



Country Results Briefs produced by JST



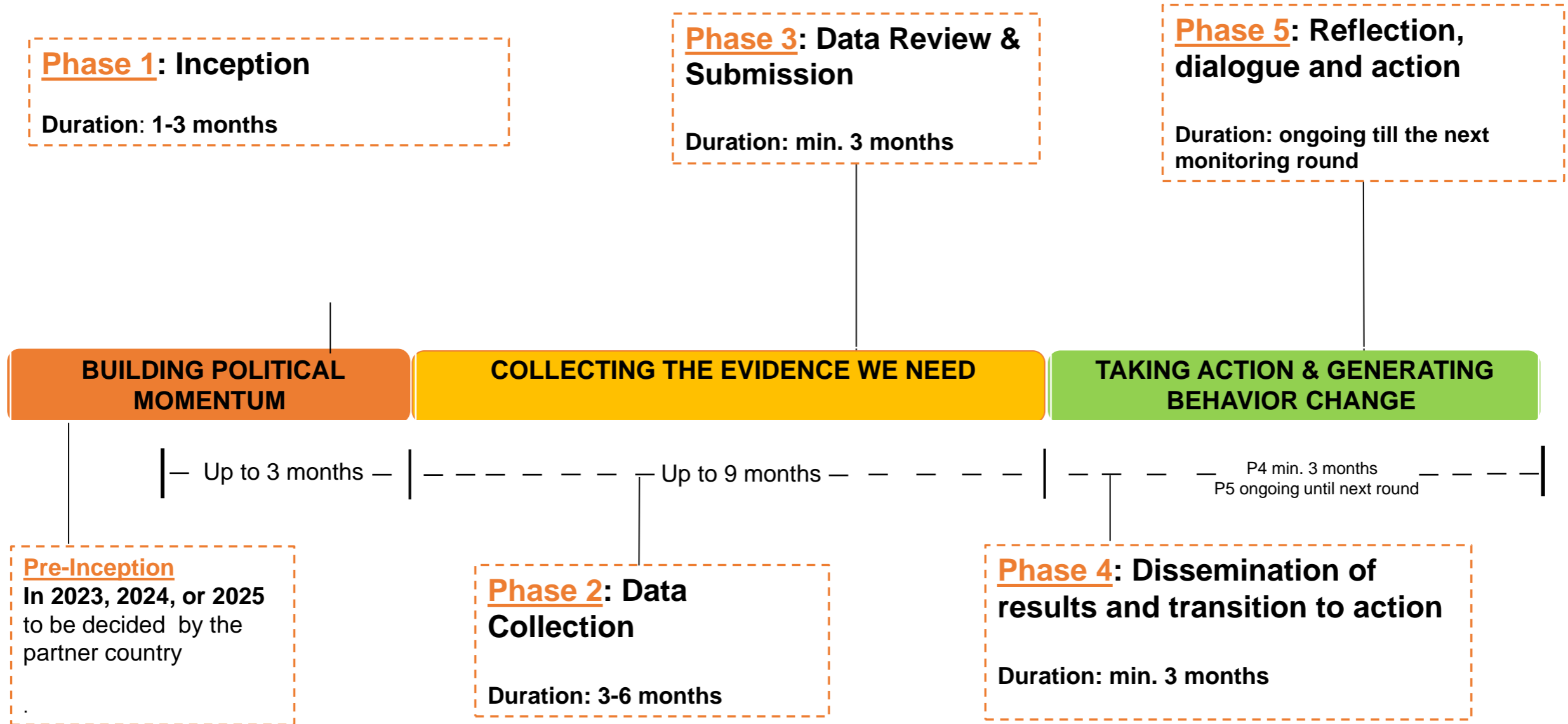
Raising awareness, political traction, and ownership across all stakeholders



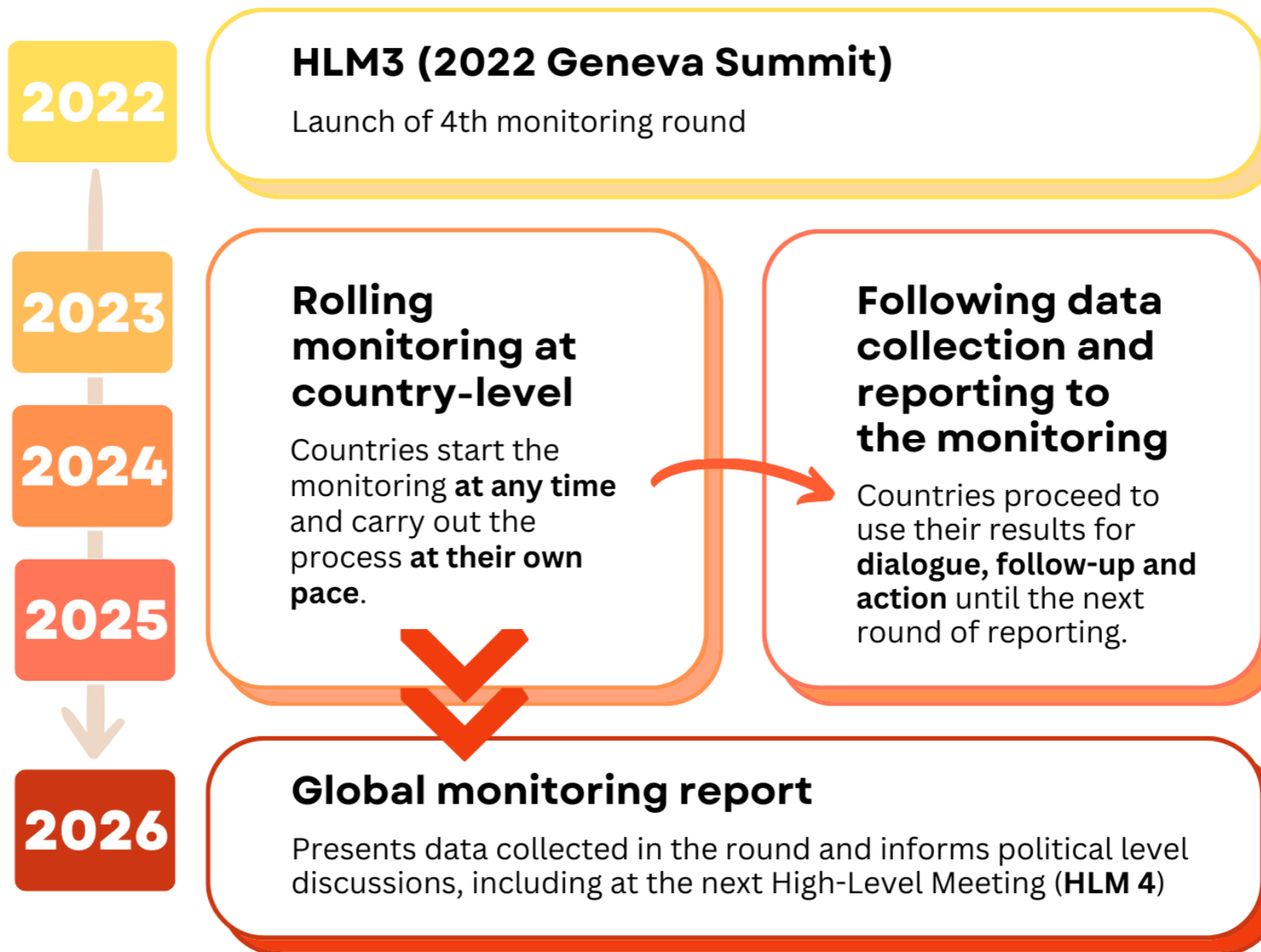
Digitalised data collection – new online reporting tool (ORT)



Monitoring Roadmap: Snapshot Phases 1-5



Monitoring Process: global level



Reflections

Questions and answers