

THE GLOBAL PARTNERSHIP AT A GLANCE



Global
Partnership
for Effective Development
Co-operation

WHAT

WHAT DOES THE GLOBAL PARTNERSHIP FOR EFFECTIVE DEVELOPMENT CO-OPERATION (GPEDC) DO?

The Global Partnership for Effective Development Co-operation (GPEDC) is the primary multi-stakeholder platform for driving the effectiveness of all types of development co-operation, with a principle-led, evidence-based approach to deliver sustainable development. The four effectiveness principles empower partners to create more equal partnerships, leading to more sustainable development outcomes. The Partnership's monitoring exercise, meanwhile, provides evidence that enables tracking progress and taking action on these principles and related commitments.

- 1 COUNTRY OWNERSHIP
- 2 FOCUS ON RESULTS
- 3 INCLUSIVE PARTNERSHIPS
- 4 TRANSPARENCY AND MUTUAL ACCOUNTABILITY

COUNTRY OWNERSHIP OVER THE DEVELOPMENT PROCESS



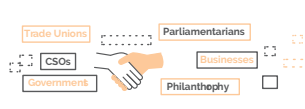
All partners work together under country leadership to maximize the impact of development resources and achieve national priorities.

A FOCUS ON RESULTS



Development efforts have a lasting impact on eradicating poverty and enhancing partner countries' capacities.

INCLUSIVE DEVELOPMENT PARTNERSHIPS



All partners are engaged in development planning and implementation, recognizing their specific and complementary roles.

TRANSPARENCY AND MUTUAL ACCOUNTABILITY



Stakeholders are transparent in their co-operation and hold each other accountable for delivering on mutually agreed outcomes.

WHO



NATIONAL AND LOCAL GOVERNMENTS



PRIVATE SECTOR



PARLIAMENTS



CIVIL SOCIETY



BILATERAL AND MULTILATERAL ORGANIZATIONS

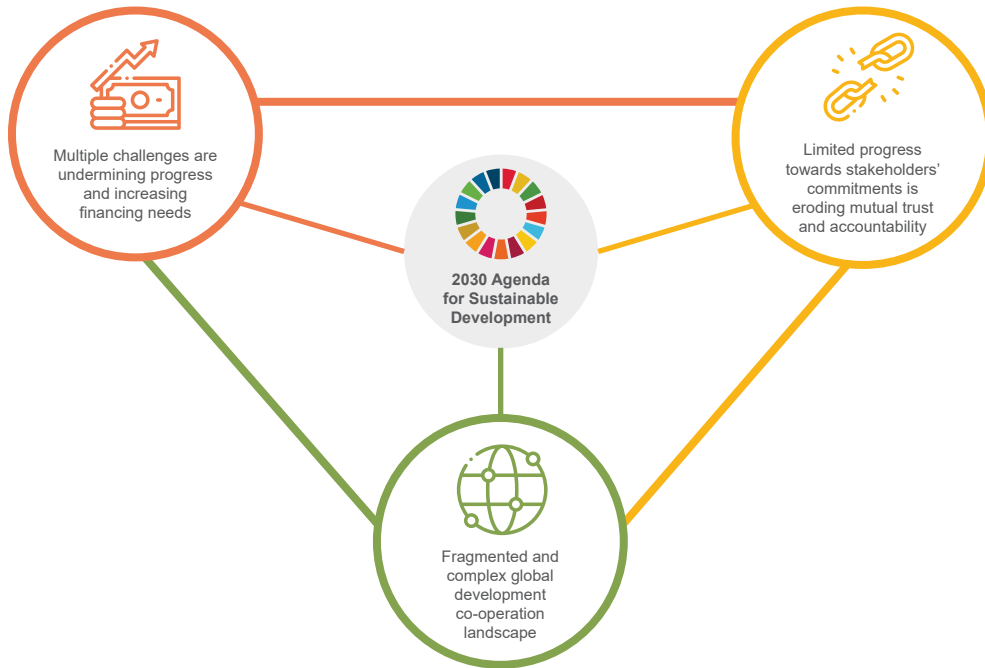


TRADE UNIONS



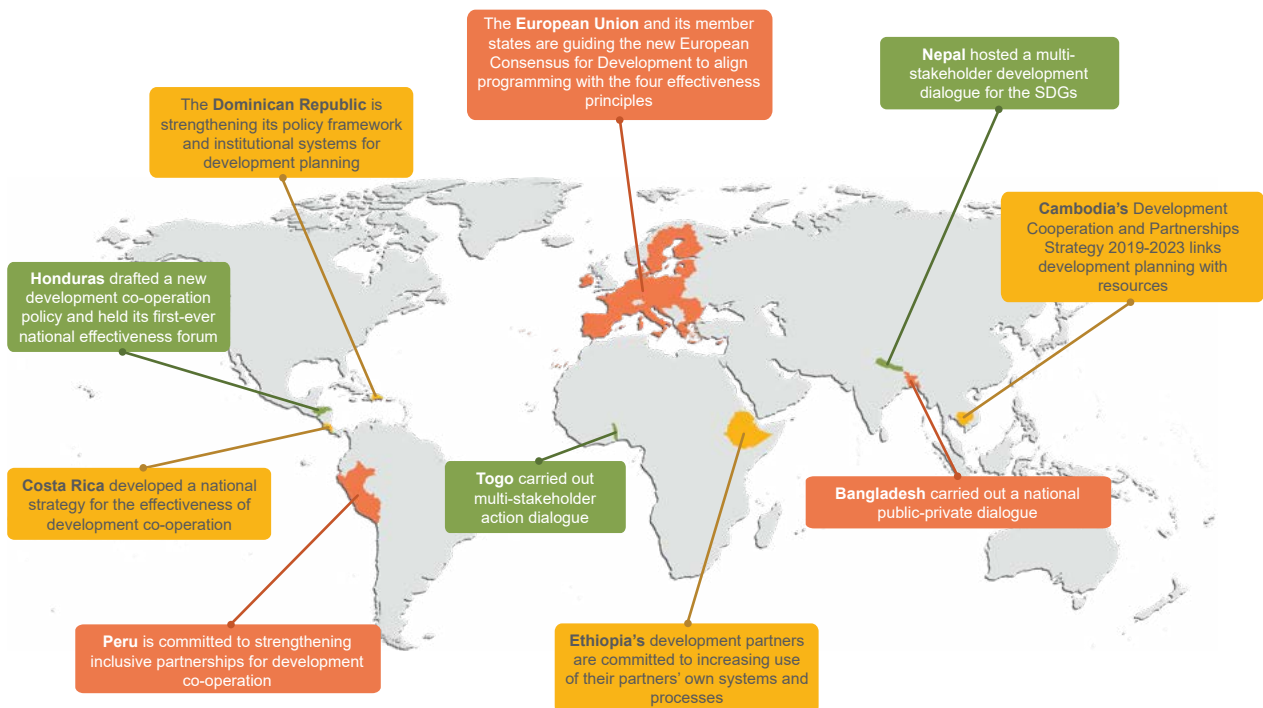
PHILANTHROPY

WHY IS THE EFFECTIVENESS OF DEVELOPMENT CO-OPERATION MORE IMPORTANT THAN EVER?



Countries and their partners are committing to more effective development co-operation

Over the years, many development partners have adapted their results frameworks and systems, and supported partner countries in their efforts to align to the SDGs.



HOW IS THE GPEDC SUPPORTING ACHIEVEMENT OF THE 2030 AGENDA FOR SUSTAINABLE DEVELOPMENT?

By bringing diverse development actors together, the Global Partnership fosters trust and in-country policy action. It provides new and relevant evidence that empowers country-level actors to understand and tackle challenges, resulting in better development co-operation. The GPEDC supports better development co-operation and partnerships by focusing its work on 3 core outputs:



OUTPUT 1

Generating Evidence: The New Monitoring

- Successful Preinception
- Inclusive and Strategic Country-level Inception Phase
- Rigorous Data Collection and Reporting



OUTPUT 2

Driving Informed Policy Dialogue and Action

- Promoting Country Dialogue and Follow-up
- Advancing Global Governance and Decision-Making
- Strengthening and Promoting Partnerships



OUTPUT 3

Fostering Political Awareness and Uptake

- Driving a Comprehensive Advocacy and Outreach Plan
- Awareness-raising on Effectiveness Agenda, Principles, and Application
- Promoting the Monitoring Exercise and Uptake of Findings

The GPEDC's multi-stakeholder network

OUR GLOBAL REACH:

161 countries
56 organizations

CO-CHAIRS: OUR LEADERSHIP

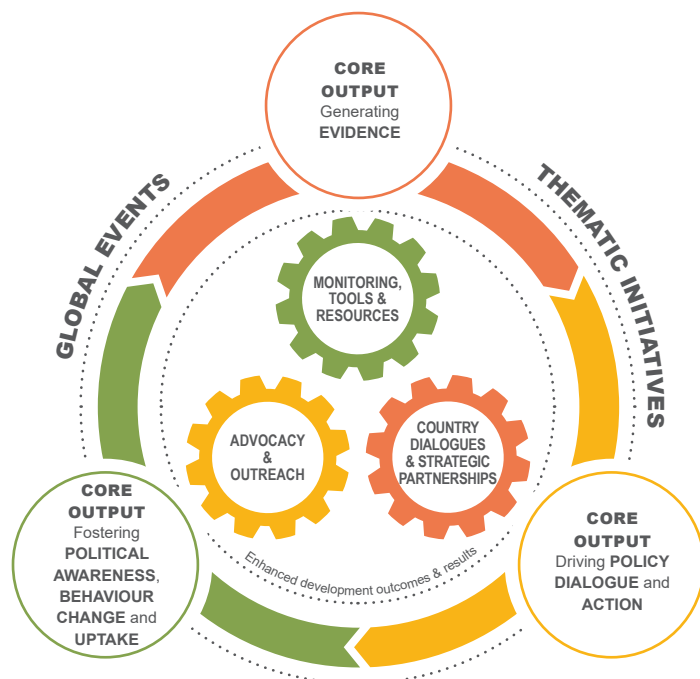
- Partner country
- Development partner
- Dual character country
- Non-executive constituencies

A STEERING COMMITTEE

25 representatives from:

- national and local governments
- civil society
- private sector
- trade unions
- parliaments
- philanthropy

BETTER DEVELOPMENT CO-OPERATION AND PARTNERSHIP: CORE OUTPUTS OF THE 2023-2026 WORK PROGRAMME



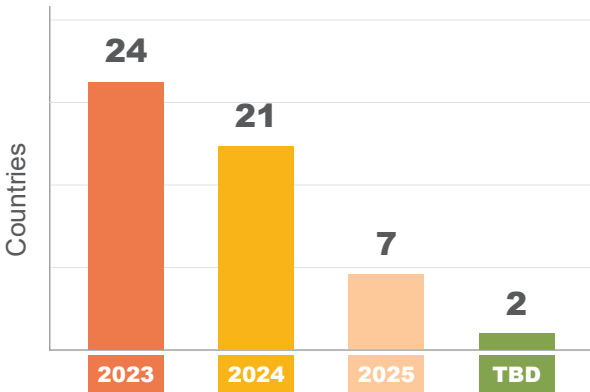
GPEDC monitoring provides evidence to Sustainable Development Goal (SDG) follow-up and review on:

- Respecting countries' policy space and leadership (SDG 17.15)
- Multi-stakeholder partnerships for development (SDG 17.16)
- Gender equality and women's empowerment (SDG 5c)



Countries participating in the monitoring exercise

as of 25 January 2024



Outputs created using monitoring data



WHEN

THE JOURNEY FROM PARIS TO THE PRESENT: TOWARDS MORE INCLUSIVE DEVELOPMENT CO-OPERATION

